



RENTASIGNAL

---

Forex Signals Marketplace

# **RENTING** accounts **GUIDE**

---

TRADING FOREX MARKET

# Renting accounts Guide

---



# Table of Contents

INTRODUCTION TO RENT A SIGNAL.....	1
Renting Feature.....	2
New Account .....	3
Introduce your personal information .....	3
First time log in. ....	5
RISK SETTINGS .....	7
Managing Risk Settings per Account .....	8
Managing Risk Settings per Signal .....	9
SIGNAL SUBSCRIPTIONS .....	11
How to subscribe signals .....	12
FX-Portfolio Wizard .....	13
My Account.....	15
Size Multiplier .....	16
RAS EA – Install and Setup .....	17
Download and Install .....	18
Quick Setup .....	22
Uninstall.....	25
Advanced Setup .....	25
Practical samples .....	28
Contact Us for any support .....	35

---

## Introduction to Rent a Signal


A FX Signals Marketplace where you will be able to mirror the Worldwide FX Traders, trade for trade.





*Thanks for choosing Rentasignal Renting. As you will read on the following pages, trading with Rentasignal is just a few clicks away.*

To save time and make your trading life easier, Rentasignal developed Renting accounts, as one of the most advanced methods where buy and sell orders are placed automatically into your account. Just setup your risk settings, select the best signals for you and forget to spend several hours in the front of your computer waiting. All trades will be executed automatically. Any buy or sell orders are sent out to be executed in your MT4 platform. Note that you will have to install your own MT4 and have it always on for receiving the trades. In your MT4 you will have to install our proprietary EA called Rentasignal EA or RAS EA.

Through Rent a Signal, you will be able to rent as many signals as you may be interested in by paying a monthly fee. You will be able to trade these signal with any broker.

 Valuable information

 Take note about

 Computer tip

 Workbook review

## Renting Feature

With renting you need to install your MT4 broker in your own computer and have it always ready for receiving the trades. In addition, you will have to install and setup our RAS EA in your broker MT4. You will be able to adjust your risk settings through My Account on Rent a Signal website. Also, your MT4 is fully available for any possibility as usual.



### Time to start

Rentasignal needs you to create an account first. There are three different types of account according with your needs. Autotrading and Renting accounts were designed for traders looking to minimize the effort of trading. A Signal Provider account is for those who desire to offer his trading through a Rent a Signal's signal to other traders. If you want to open a Renting account for renting signals, you have to click on New Account, then to Open

Renting account.

If you want to Rent signals and provide your signals to others, you will need to have two accounts, a Renting and a Signal Provider account.

## New account

**Think twice** if Renting is better for you than Autotrading account.

Opening your Renting account is really easy. Just click on **New Account**. Then click on OPEN RENTING ACCOUNT and just follow the steps as indicated.

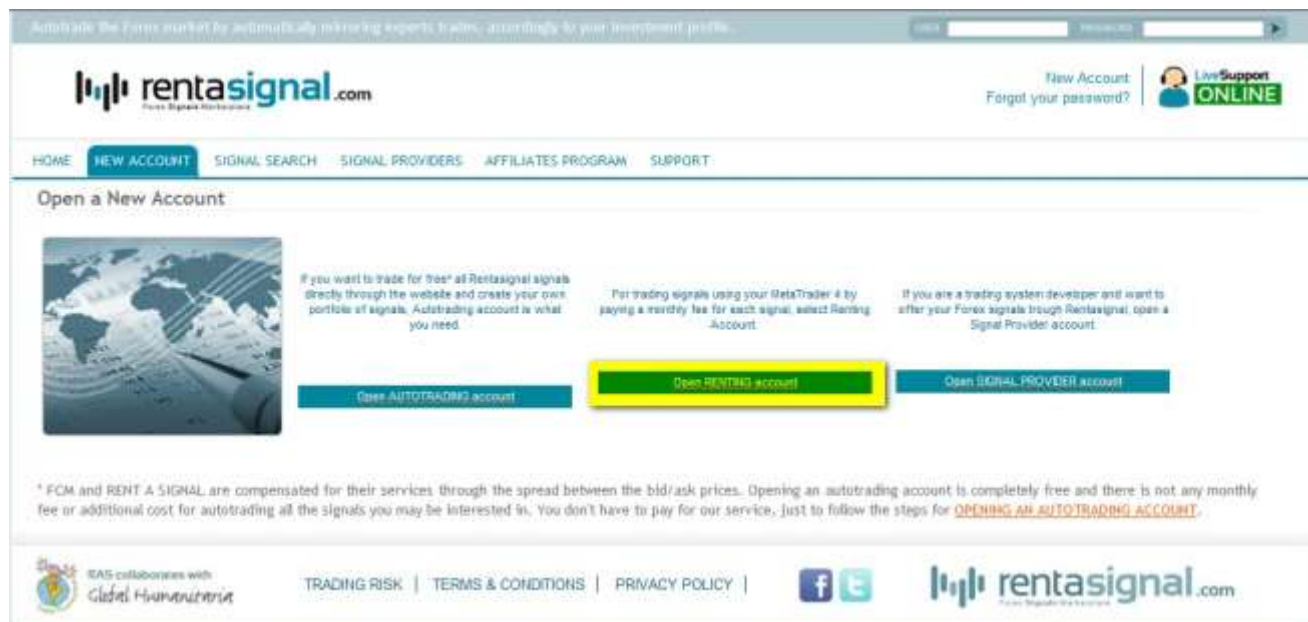


FIGURE 1.1 There are three types of accounts. If you are a client, you can choose between Autotrading or Renting account. If you are going to provide your trading through a signal, you have to choose Signal Provider account.

## Introduce your personal Information

A new window will be shown after clicking over the logo. Carefully complete all the required data, navigate to page bottom, and click on **CREATE NEW ACCOUNT**.

Note that you will only be able to use one e-mail address per account, so if you want to open more than one Rentasignal account, or any other type of account, you will need to use different e-mail accounts.

# RENTASIGNAL AUTOTRADING

Subscribe the Terms and Conditions, Privacy Policy, and our account profile.

rentasignal.com

NEW ACCOUNT | SIGNAL TERMIS | SIGNAL PROFILES | AFFILIATE PROGRAM | SUPPORT

### Open RENTING Account

We welcome you on RENT A SIGNAL! Once you open a Signal Provider account you will be able to create your own FX Signals and receive the best compensation. Any questions, let us know! Don't miss the opportunity to become one of our FX Signal Providers.

**Personal Information**

FIRST NAME \*

LAST NAME \*

COUNTRY \*

Argentina

**Contact Information**

TELEPHONE \*

ADDRESS \*

**Marketing Preferences**

RECEIVE OUR NEWSLETTERS \*

No

RECEIVE OUR NEWS TARGETS ALERTS AND REMINDERS \*

No

RECEIVE SPECIAL OFFERS AND PROMOTIONS FROM OUR PARTNER \*

No

Trading foreign exchange on margin carries a high level of risk, and may not be suitable for all investors. The high degree of leverage can work against you as well as for you. Before deciding to invest in foreign exchange you should carefully consider your investment objectives, level of experience, and risk appetite. The possibility exists that you could sustain a loss of some or all of your initial investment and therefore you should not invest money that you cannot afford to lose. You should be aware of all the risks associated with foreign exchange trading, and seek advice from an independent financial advisor if you have any doubts.

I HAVE CONSIDERED THE ABOVE STATEMENT, I WISH TO CONTINUE WITH MY ACCOUNT APPLICATION

WHAT DOES IT ALL MEAN?

Techniesp Niccolò

Type the five words

Continue with account application

Partnership with Capital Markets

TRADING RISK | TERMS & CONDITIONS | PRIVACY POLICY |

rentasignal.com

FIGURE 1.2 Introduce your personal information that must be the same information to be used by opening the account with the broker.



You will receive an e-mail from Rentasignal in order to confirm your new account. The e-mail contains a one-time link to click. Once you have clicked the link, you will be forwarded to your new account for the first time and you will have the possibility to change your password.

## First Time Log In

Click on the link received to use your **one-time only login**. After clicking, you will be forwarded to your account.

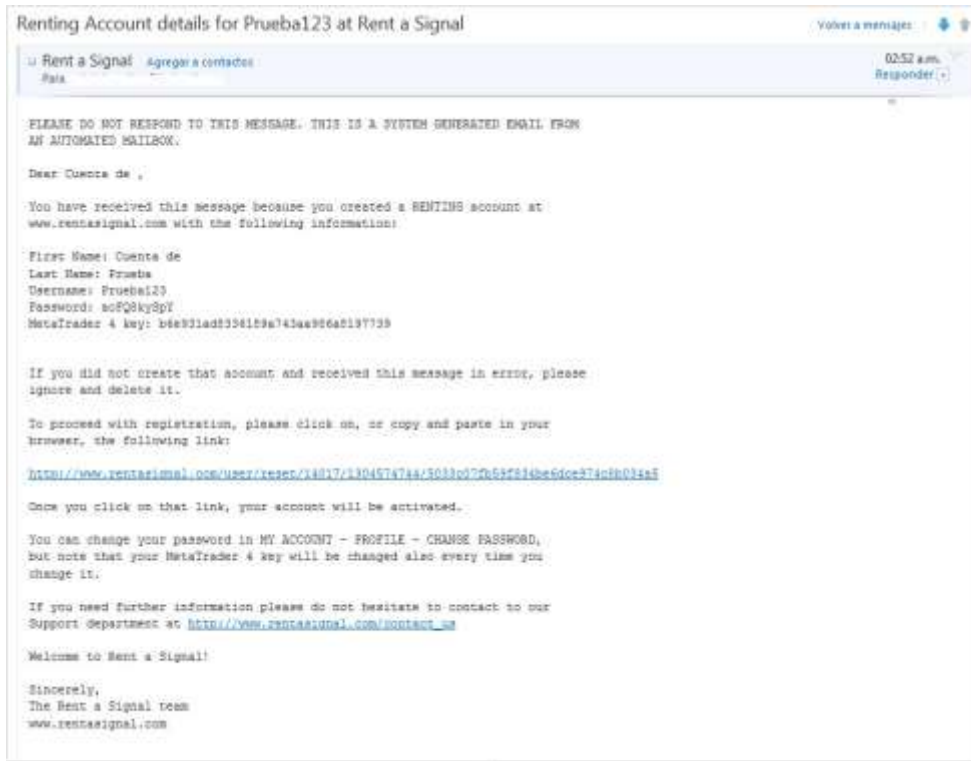


FIGURE 1.3 Sample of the e-mail that you will receive for confirming your autotrading account with Rent a Signal.



FIGURE 1.4 One-time login, then you will be able to change your password.

## RENTASIGNAL AUTOTRADING

When log into your Autotrading account for the first time, you have to change your password. Once you have successfully changed the password, logout and login again.

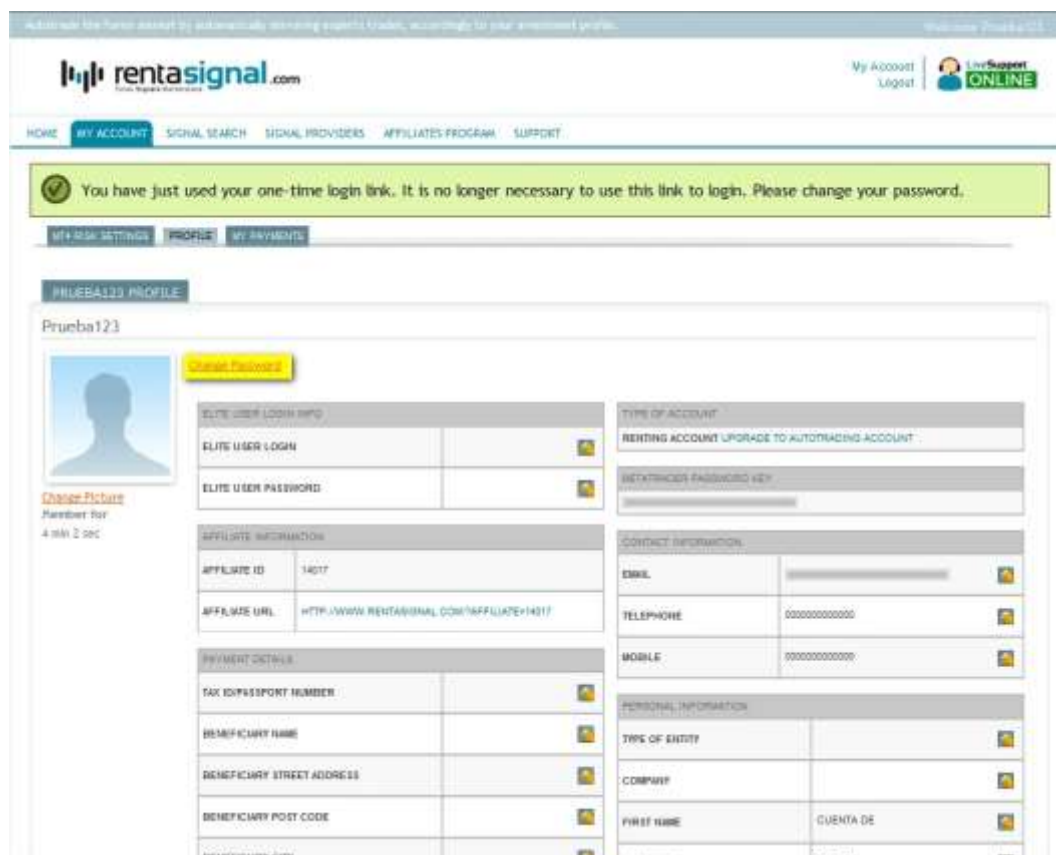


FIGURE 1.5 Click on Change Password for introducing your definitive password.

Your Renting account is ready for being used with your installed MT4

## Risk Settings

*You will set your risk settings for adjusting your trading to your risk profile.*

## Managing Risk Settings per Account

**Account Settings** are related to your account and overrides any individual signal settings. **W**hat you select here will have a direct impact on the trades of the subscribed signals in your trading account.

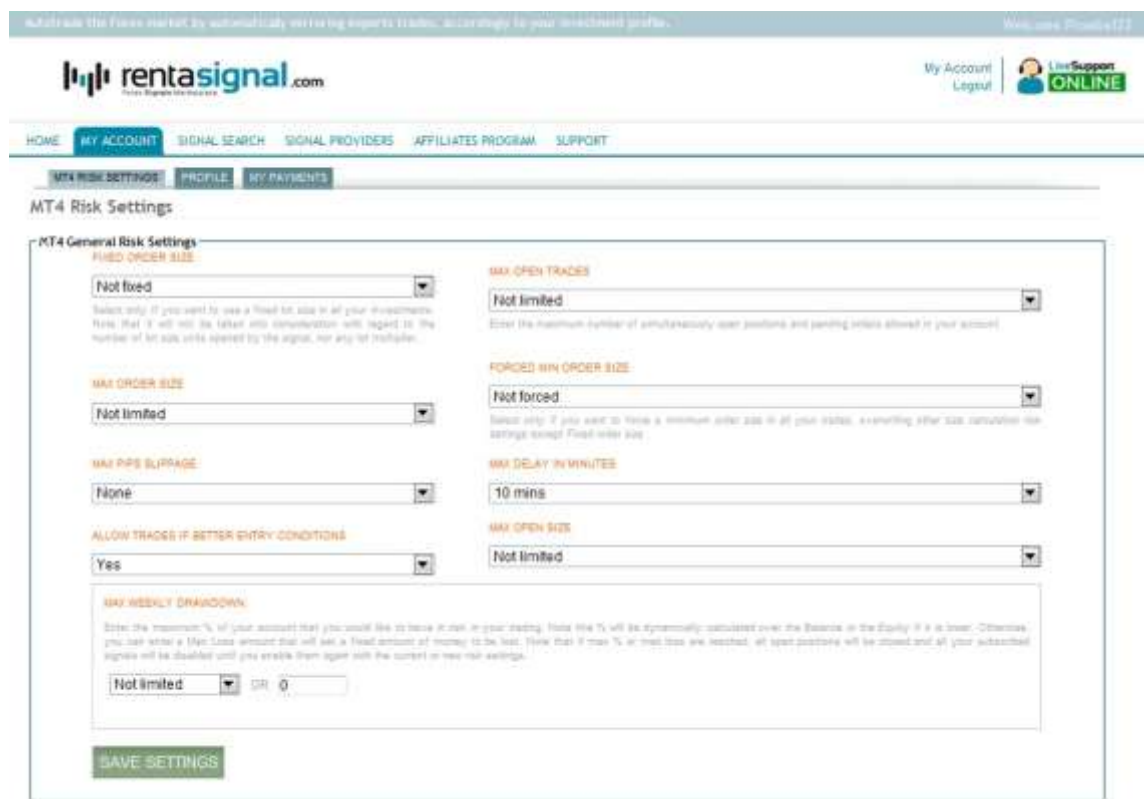


FIGURE 2.1 General Risk Settings

**Fixed Order Size:** Fix the order size for all your trades, even your signal provider is trading with different sizes.

**Max Order Size:** Set a maximum order size for all your trades. It will prevent you to trade with a higher size than your desired limit.

**Max Open Trades:** Set the maximum number of simultaneously open trades.

If you want to allow 10 trades as the limit, just set this value to 10. If your signal provider to keep sending orders, Rentasignal will ignore any new orders until the current open orders value is below the restriction level.

**Forced Limit Size:** Select only if you want to force a minimum order size in all your trades, overwriting other size calculation risk settings except Fixed order size.

**Max Open Size:** Use this field for limiting the maximum open size for all your open trades.

**Max Weekly Drawdown:** Enter the maximum % of your account that you would like to have in risk per week. Note this % will be dynamically calculated over the Balance or the Equity if it is lower. Otherwise, you can enter a Max amount that will set a fixed amount of money to be lost per week. Note that if max % or max drawdown is reached, all open positions will be closed and your account will be disabled until you enable it again with the current or new risk settings.

## Managing Risk Settings per signal

**Individual Signal Risk Settings** to control each signal with different criterions.

You can also adjust your risk per individual signal, being possible to define different behaviors for each of them. These settings are independent from General Account Risk Settings and are overridden by them.

You need to be subscribed to at least one signal to see risk settings per signal under your MT4 Risk Settings Tab.

ID	SIGNAL EXPERT ID	MAX WEEKLY DRAWDOWN (%)	SIZE MULTIPLIER	MAX OPEN TRADES	MAX OPEN SIZE	FIXED ORDER SIZE	S/L IN PIPS	TP IN PIPS	LESS RISKY (?)	ENABLED
183	ENVELOPE 2.11 BY HOLDER	NOT OR 0	1.00	NOT LIMITED	NOT LIMITED	NOT FIXED	0	0	<input type="checkbox"/>	Disable
417	SCALP_NET_V1 3.2 TF BY HOLDER	NOT OR 0	1.00	NOT LIMITED	NOT LIMITED	NOT FIXED	0	0	<input type="checkbox"/>	Enable
484	SCALP_NET_V1 5 TF BY HOLDER	NOT OR 0	1.00	NOT LIMITED	NOT LIMITED	NOT FIXED	0	0	<input type="checkbox"/>	Enable
31987	TICKSCALPER VERSION 3.44 BY (R) MARTIN	10% OR 0	1.00	NOT LIMITED	NOT LIMITED	NOT FIXED	0	0	<input type="checkbox"/>	Disable

Save Settings

FIGURE 2.2 Individual Risk Settings available for each subscribed signal

**Max Open trades:** Set the maximum number of simultaneously open trades per signal.

**Size Multiplier:** This is one of the most important settings, because the size of your trades will be calculated based just on Size Multiplier. Rentasignal will multiply the signal’s size orders with Size Multiplier value and your orders will be opened with the resulting size.

**S/L in pips:** You will be able to introduce your own Stop Loss overriding signal’s provider value, if applicable.

## RENTASIGNAL AUTOTRADING

**T/P in pips:** You will be able to introduce your own Take Profit Loss overriding signal's provider value, if applicable.

**Less risky:** If ticked, this setting applies to S/L in pips. By applying this setting, Rentasignal will apply your selected values for S/L in pips, overriding provider's stop loss, but only if this value provides a lower risk than you signal's provider risk.

**Unsubscribe button:** You can click on this button to cancel your subscription to the signal.

**Enable (Red)/Disable (Green) buttons:** You can click on this button to stop receiving trades for a particular signal.



Always click on SAVE SETTINGS after performing any changes.  
**REALLY IMPORTANT**

## Signal Subscriptions

*Rentasignal lets you choose from hundreds of signals from worldwide providers. Adding any of these signals to your Autotrading account is really easy.*





## RENTASIGNAL AUTOTRADING

- From INDIVIDUAL STATS of each signal

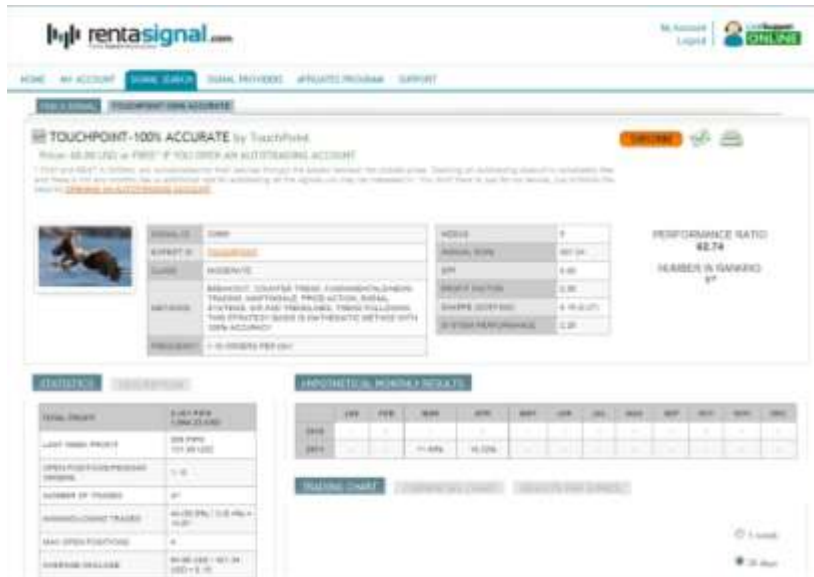


FIGURE 3.3 SUBSCRIBE is also available from the individual stats web page of all signals.

## FX-Portfolio Wizard

FX-Portfolio Wizard was developed by Rentasignal to help you select signals and adjust their order sizes to your risk profile and account equity.

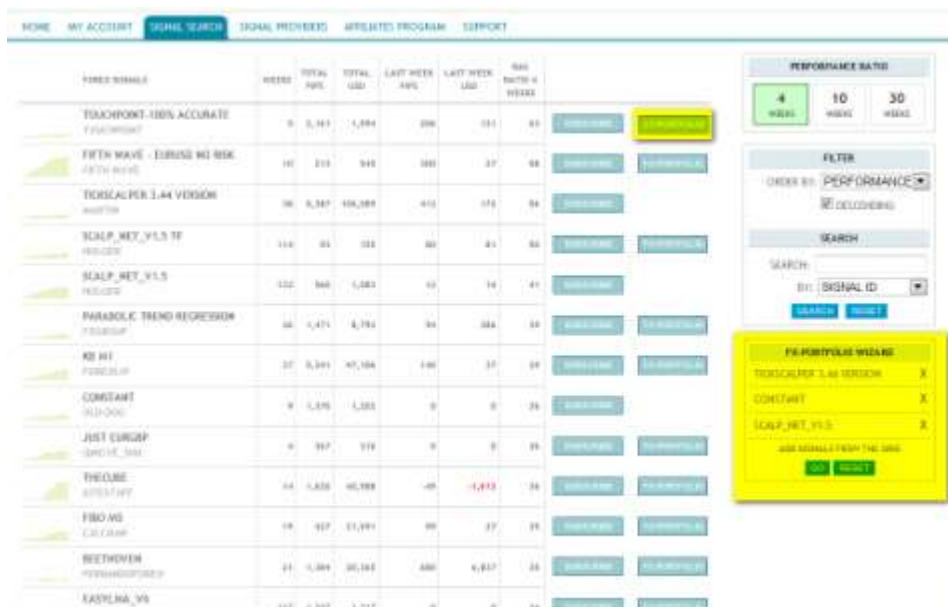


FIGURE 3.4 FX-PORTFOLIO WIZARD is a tool for selecting, comparing and adjusting signals.

From Find a Signal web page, you just need to select as many signals you may want to compare and adjust, then click on FX-Portfolio Wizard green button. You will get the most useful information to make your signals selection and decide what adjustments should be done accordingly to your risk profile.

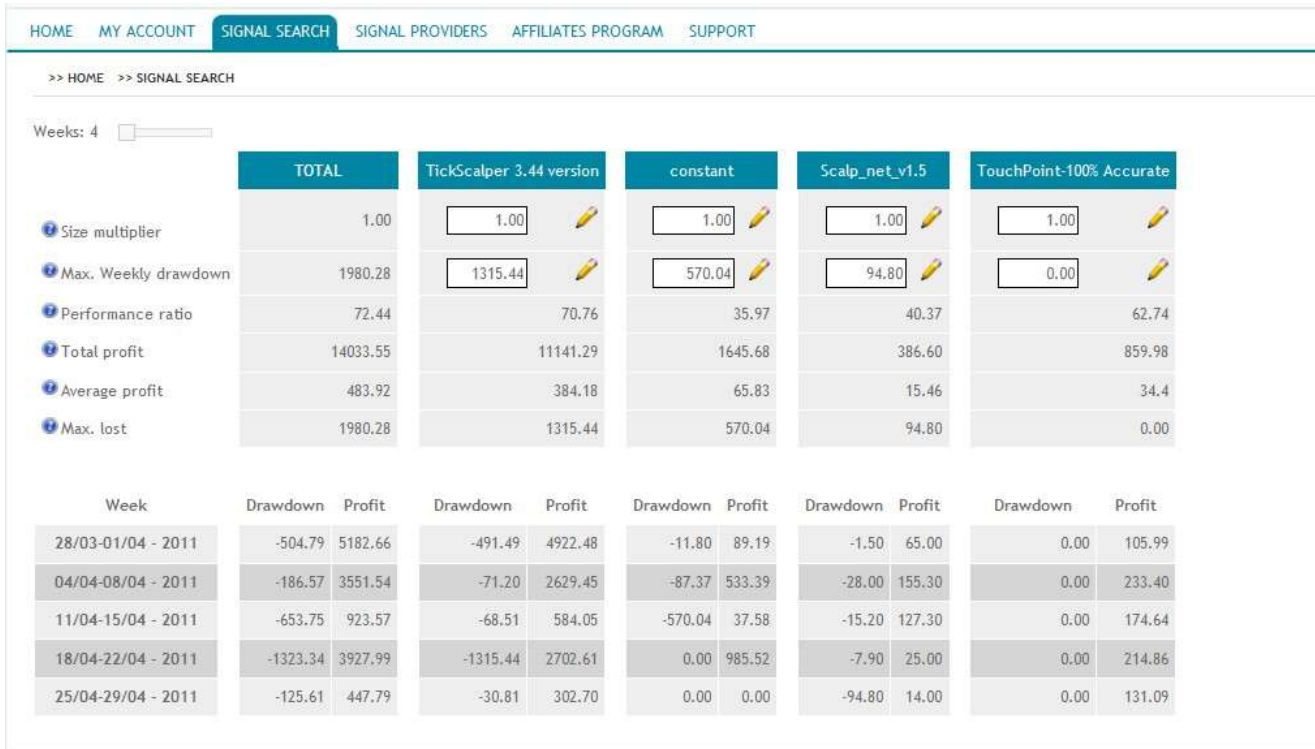


FIGURE 3.5 FX-PORTFOLIO WIZARD displaying a comparison between n three signals.

Try different values of SIZE MULTIPLIER, WEEKLY STOP LOSS and maybe CURRENCY PAIRTS and click on RECALCULATE for seeing how Max weekly drawdown and profit change their values. This is the best tool for adjusting the order sizes of the signals on your trading, accordingly to the size of your account and of course, your risk profile.



As a general rule of thumb, Total account Max Weekly Drawdown and Max Weekly Drawdown per signal should not be more than 30% and 10% respectively.

## My account

**My account** is your personal area within Rentasignal.

**M**y Account is your personal area where you will be able to handle from any issue regarding your profile and autotrading account.

Besides managing your Risk Settings, you can also check your open positions, balance, equity, execute manually your own orders, check your account history and modify your profile.



FIGURE 3.7 See full details of any trade within OPEN POSITIONS, PENDING ORDERS and ACCOUNT history tabs.

Within My account you will find six different tabs as follows:

**RISK SETTINGS:** set your own risk settings. See chapter two for more.

**OPEN POSITIONS:** check your current open trades and if you want, you also will be able to close any position or change its stop loss or take profit values.

**PENDING ORDERS:** check your current pending orders and modify their stop loss or take profit values, even close the order if you don't like it.

**ACCOUNT HISTORY:** find the history record of all our autotrading account. You can filter the information per signal, dates, etc.

**MANUAL TRADING:** you can execute your own manual trades.

**PROFILE:** modify your personal data and any other additional information about you.

## Size Multiplier

**Size Multiplier** is the key setup features to get your desired sizes of your trades.

The **SIZE MULTIPLIER** is the key setting for adjusting the signal's order sizes to your desired trading order sizes.

In order to make easier for you to adjust the size of your orders accordingly to the signals' size orders, you will only have to take into consideration the **SIZE MULTIPLIER** risk setting available in Individual Signals Settings.

· See some samples:

Signal Order Size	Your Size Multiplier	Your Order Size Results
0.01	10	0.10 (10,000 = 10k)
0.10	10	1.00 (100,000 = 100k)
0.10	0.5	0.05 (5,000 = 5k)
0.30	1	0.30 (30,000 = 30k)
1.00	0.01	0.01 (1,000 = 1k)
2.00	2	4.00 (400,000 = 400k)

According to above examples, for making easier for you to adjust the size of your orders accordingly to the signal's size orders, you will only have to take into consideration the **SIZE MULTIPLIER** risk setting available in Individual Signals Settings.

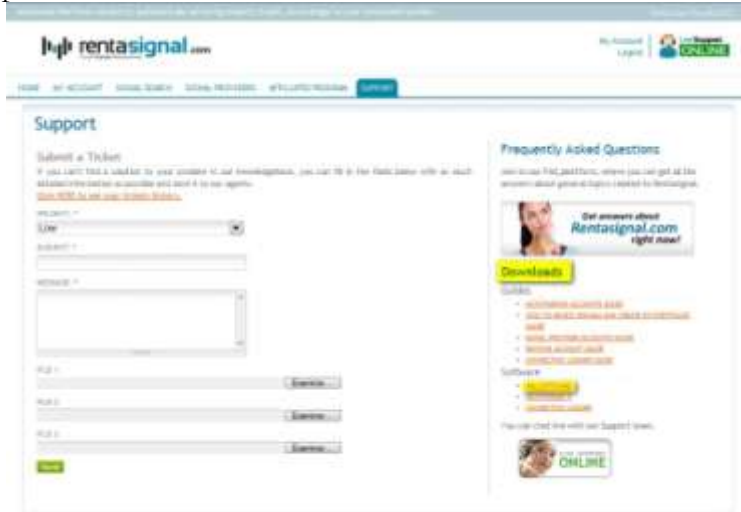
In addition, you will continue having the possibility to fix the size of your orders by using "Fixed Order Size" risk setting, and to limit the maximum or minimum size of your orders, by using "Max Order Size" and "Forced Min Order Size" risk settings respectively.

## **RAS EA – Install and Setup**

*For Renting Signal you have to install our RAS EA within your MT4 that is going to be used for trading your rent signals.*

## Download and Install

Download the Rent a Signal installer from [http://www.rentasignal.com/downloads/RAS\\_EA.exe](http://www.rentasignal.com/downloads/RAS_EA.exe) and save it into your desktop.



Then execute the downloaded file and the installation process will begin. Depending on your operating system you might see a warning. Click “Continue”. \*Vista and Windows 7 users might need to run the installer with administrator rights.



Read carefully all messages installer provides to you





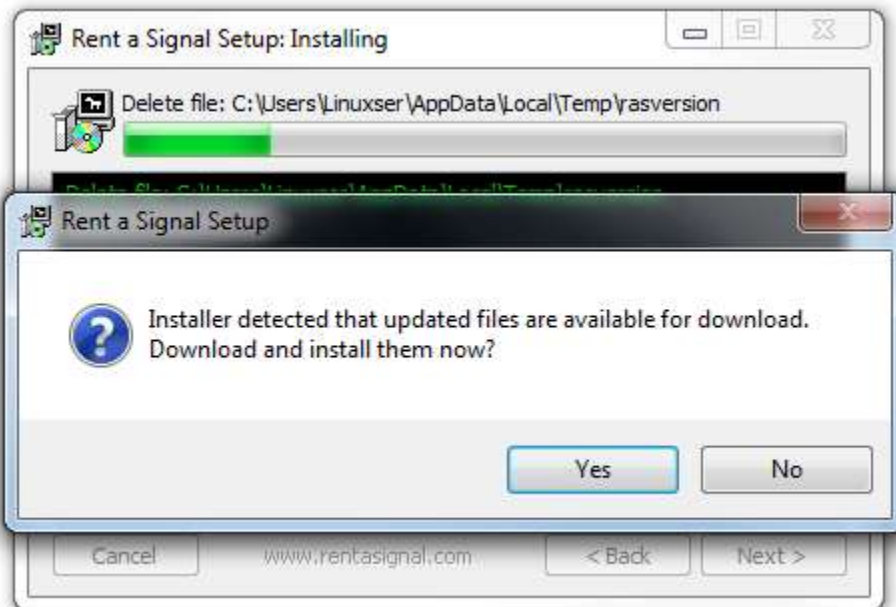
You will have the possibility to select Automatic or Manual Install. If you are only to use one RAS EA, the best and more safety option is Automatic Install. Otherwise, you will have to select Manual Install for selecting the folder of your MT4 where you want to install the RAS EA this time



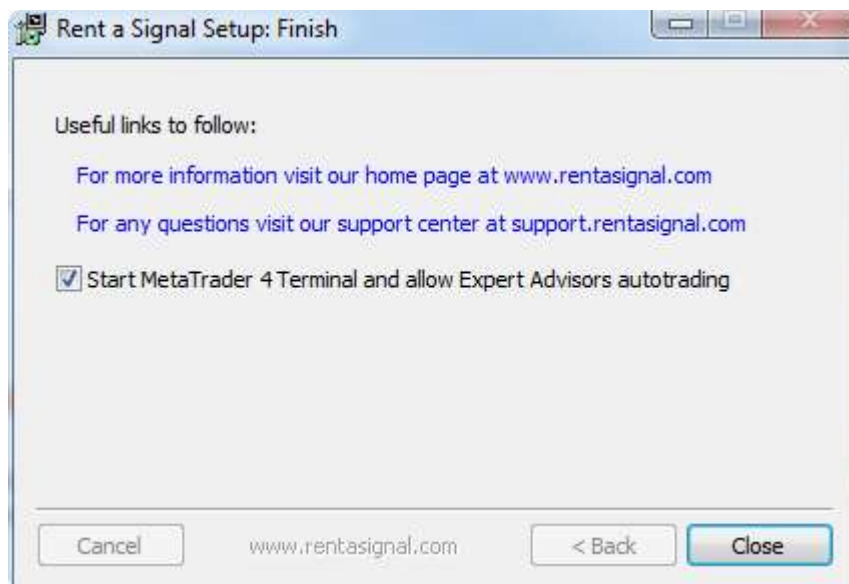
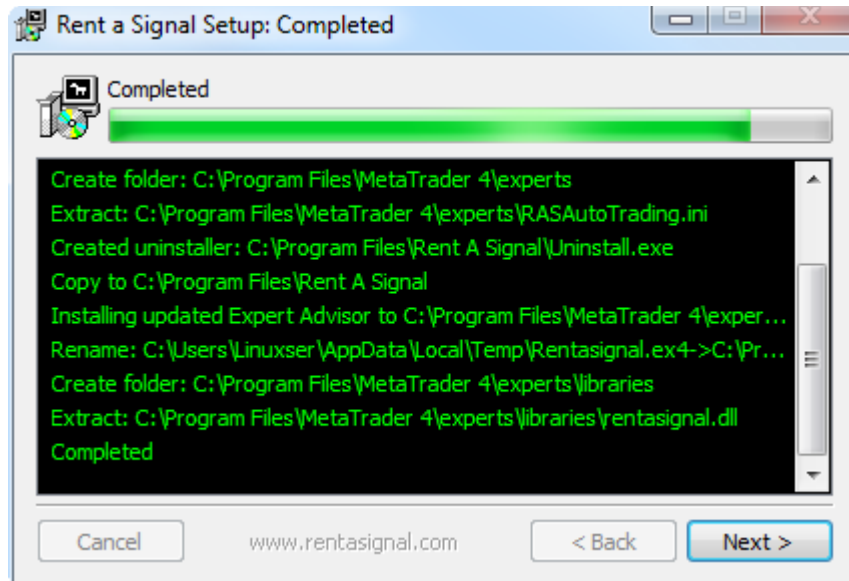
IMPORTANT: Installer will make changes on your MetaTrader to make it run properly with Rent a Signal EA.

**Required Data**

It is required that you introduce your USERNAME and PASSWORD for finishing to install your RAS EA. You will have to be connected to the Internet for retrieving your profile details.



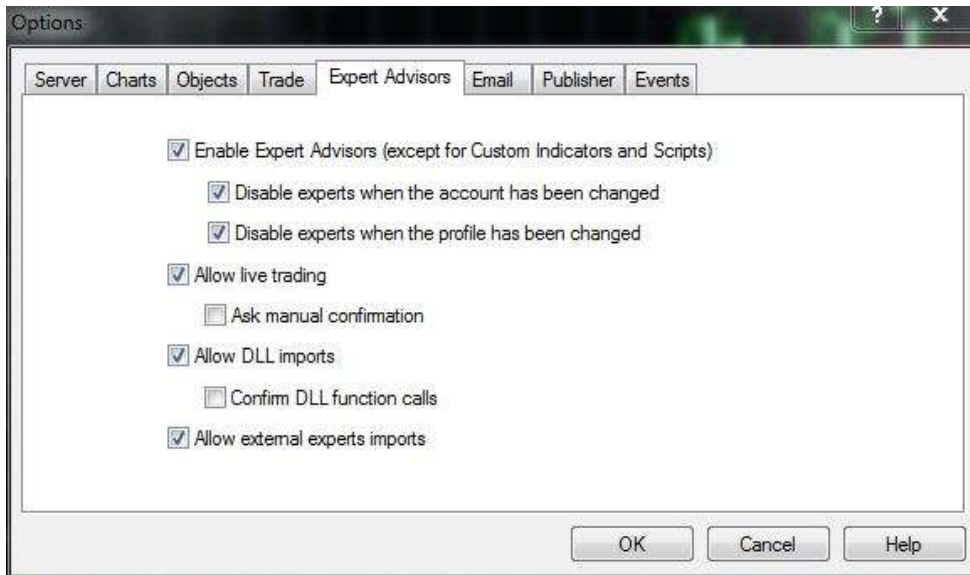
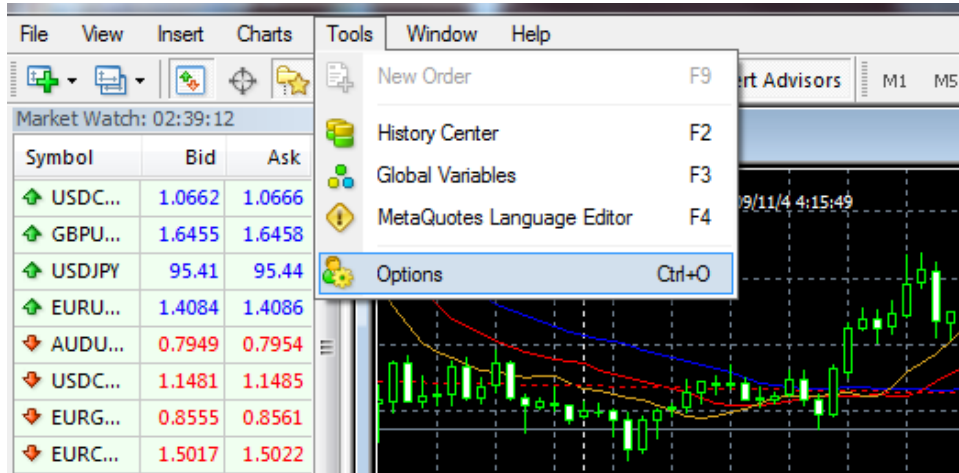
Click always on YES for installing the last available version of the RAS EA. Note that you will have to upgrade your RAS EA version from time to time.



Your RAS EA has been successfully installed.

## Quick Setup

Rentasignal EA is installed by default as it is required for working properly. Just for double checking see below how MetaTrader 4 must be setup by clicking on TOOLS – OPTIONS.



The Rentasignal EA must be attached in one Chart. Note that you ONLY have to attach in one chart, regardless you were going to trade with it as many symbols as the trader.

Find Rentasignal EA on the left of your MT4 – NAVIGATOR, below EA option. Then, drag and drop the Rentasignal EA into one chart, preferably EURUSD H1. Also check EA button is activated (or green)

## RENTASIGNAL AUTOTRADING

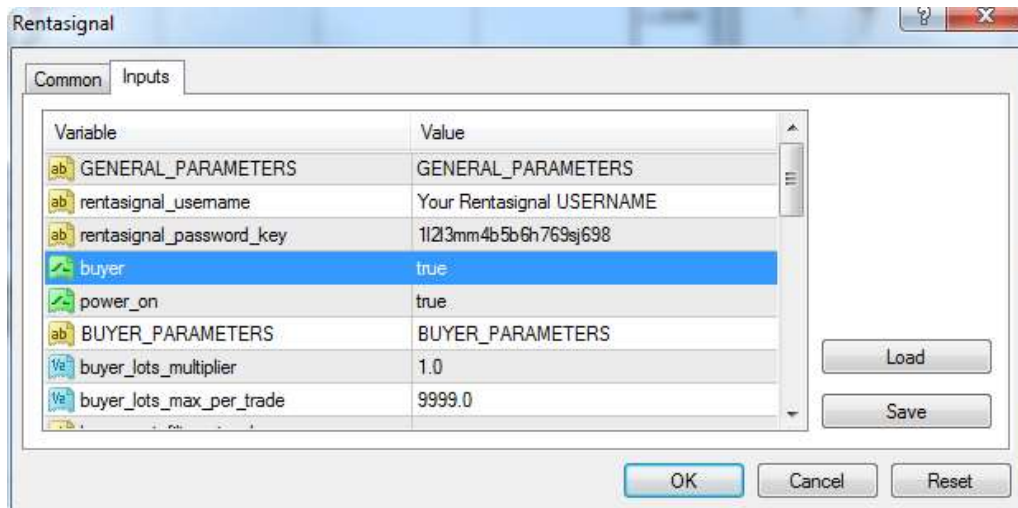
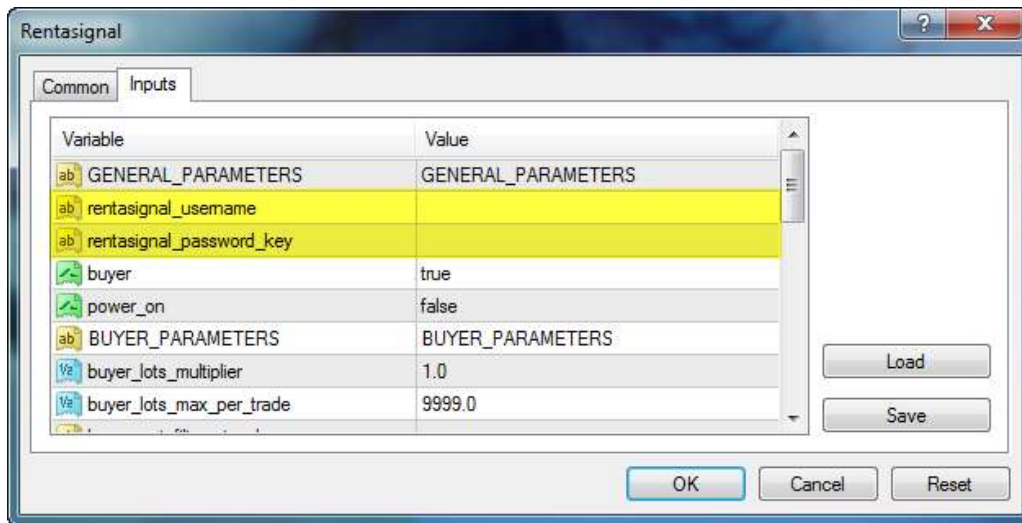


See below all settings available for Rentasignal EA, but some of them are for Renting users, others for Signal Providers. Renting users must use GENERAL\_PARAMETERS and BUYER PARAMETERS.

Variable	Value
ab GENERAL_PARAMETERS	GENERAL_PARAMETERS
ab rentasignal_username	
ab rentasignal_password_key	
buyer	true
power_on	false
ab BUYER_PARAMETERS	BUYER_PARAMETERS
1/2 buyerLotsMultiplier	1.0
1/2 buyerLotsMaxPerTrade	9999.0
ab buyerOptFilterSignal	
123 buyerInstallVersion	1
buyerPartialClosing	true
buyerStpBroker	false
buyerOpenOldTrades	true
ab SELLER_PARAMETERS	SELLER_PARAMETERS
123 sellerRentasignalId	0
ab sellerOptFilterMagicNumber	
ab sellerOptFilterComment	
ab ADVANCED_PARAMETERS	ADVANCED_PARAMETERS
useWorkingTimeLimitation	false
123 workingTimeStartHour	7
123 workingTimeStartMinute	0
123 workingTimeEndHour	16
123 workingTimeEndMinute	0
ab SYSTEM_PARAMETERS	SYSTEM_PARAMETERS
123 timeout	20
showErrorAsAlert	true
forceExecution	false

Introduce your RAS' USERNAME in **rentasignal\_username** field. Within MY ACCOUNT – PROFILE, you will find METATRADER PASSWORD KEY. That is the value you must to fill in **Rentasignal\_password\_key**. Note you don't have to use your RAS's password here.

## RENTASIGNAL AUTOTRADING



Set **buyer** and **power\_on** to TRUE .




























Now, you can select some signals from <http://www.rentasignal.com/> and start trading them. There are no limits on the amount of signals you can receive, configure or setup.

## Uninstall

In you want to uninstall the Rentasignal EA, you only have to go to your START menu, find Rent a Signal folder and click on “Uninstall”.

## Advanced Setup

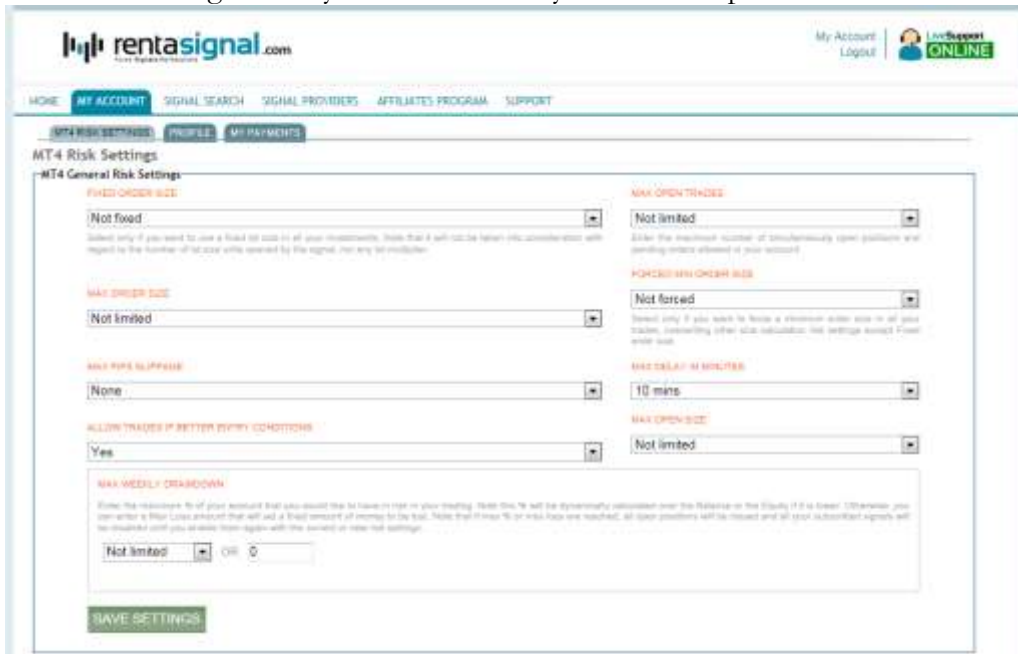
Here you will find detailed explanations of how to use most of the possibilities of Rentasignal EA. Please don't change any other value than any of the possibilities listed in this point.

Variable	Value
 GENERAL_PARAMETERS	GENERAL_PARAMETERS
 rentasignal_username	
 rentasignal_password_key	
 buyer	true
 power_on	false
 BUYER_PARAMETERS	BUYER_PARAMETERS
 buyer_lots_multiplier	1.0
 buyer_lots_max_per_trade	9999.0
 buyer_opt_filter_signal	
 buyer_install_version	1
 buyer_partial_closing	true
 buyer_stp_broker	false
 buyer_open_old_trades	true
 SELLER_PARAMETERS	SELLER_PARAMETERS
 seller_rentasignal_id	0
 seller_opt_filter_magic_number	
 seller_opt_filter_comment	
 ADVANCED_PARAMETERS	ADVANCED_PARAMETERS
 use_working_time_limitation	false
 working_time_StartHour	7
 working_time_StartMinute	0
 working_time_EndHour	16
 working_time_EndMinute	0
 SYSTEM_PARAMETERS	SYSTEM_PARAMETERS
 timeout	20
 show_error_as_alert	true
 force_execution	false

## BUYER\_PARAMETERS

**buyer\_lots\_multiplier:** This is one of the most important settings, because the size of your trades will be calculated based just on Size Multiplier. Rentasignal will multiply the signal's size orders with Size Multiplier value and your orders will be opened with the resulting size. Take into consideration that if you only want to multiply just some currency or a particular signal (being subscribed to more than one), you need to **setup Web Multiplier**.

To do this you have to log into the Rent a Signal Website, go to MY ACCOUNT – MT4 RISK SETTINGS and select the signal that you want to modify its size multiplier.



Then go to Signal stats tab and down page to bottom. Web multiplier looks as following picture



Select the Size Multiplier you want and click Save.

Note: On this same page you can pause to receive trades from this particular signal including all currencies or some of them.

**buyer\_lots\_max\_per\_trade:** this setting allows you to limit how many lots you want to trade. Let's assume you are subscribed to several signals but you want trade only 1 mini lot on each one, no matter what values per trade your signal provider is sending. You only need to change this setting to 0.1 to make all coming trades pass to your broker as 1 mini lot. If you set this value to 0.01, your trades will be made using micro lots. You also can set this value from web settings. See previous page.

**buyer\_opt\_filter\_signal:** you can filter some signals from the server and discard others. Useful when you're subscribed to several signals.

Let's assume you're subscribed to five different signals. Each of these signals has a unique ID on the Rent a Signal server. IDs are 5, 4, 3, 2 and 1.

- If you only want to trade products 4 and 1, just fill 4,1

- If you want to trade products 2, 4 and 5, just fill 2,4,5
- If you want to trade all products again, just leave the field empty.

**buyer\_install\_version:** If you're subscribed to several products and you want to receive those signals on different installations of MetaTrader 4, you need to set the buyer\_install\_version with different and unique values to avoid confusion. This feature allows our server to identify several MetaTrader installations running on your computer and deliver the right content on the MetaTrader you want to receive and not on any other. Often, for practical purposes, renting account owner configure and run several MetaTraders and set each to trade with a particular EA. Sometimes they want to disclose the behavior of the same ID with different brokers and need to clone coming trades.

To allow this possibility Rent a Signal needs to know how many MetaTrader installations you are running. To compare this feature with something maybe you know or are familiar, think on EA magic number. buyer\_install\_version feature is the Rent a signal magic number but for MetaTraders.

For better understanding please, go to examples pages.

**buyer\_partial\_closing:** You will want to have this setting always enabled because it allows receiving orders with partial closes of active trades. If this setting is disabled, your trades will be fully closed on first signal provider's signal performing a close of an active trade. Even, if signal provider's signal is closing partially some active trade.

**buyer\_stp\_broker:** This setting is related with renting accounts having accounts with Brokers using straight true processing method. Or, when your broker does not allow you to set stop loss and take profit on same trade. On this cases you need to send market order first and modify later, including on a second stage desired stop loss and take profit levels.

**buyer\_open\_old\_trades:** default true. This setting is related with trades succeeded in several cases like internet disruption in your PC, MetaTrader crash, etc. or with your personal approach to trading. By default if your subscribed signal has open trades but you just connected, Rentasignal will send that trades to you and try to execute if possible. If you want to receive trades only and since you establish a connection to Rentasignal and ignore any older trades set this settings to false.

## ADVANCED PARAMETERS

These settings on EA are related with trade time and allow you to set start and end trading time. They are useful when subscribed to signals made to trade during some specific hours or to trade during time when market volatility is high. Time is expressed on BROKER SERVER TIME.

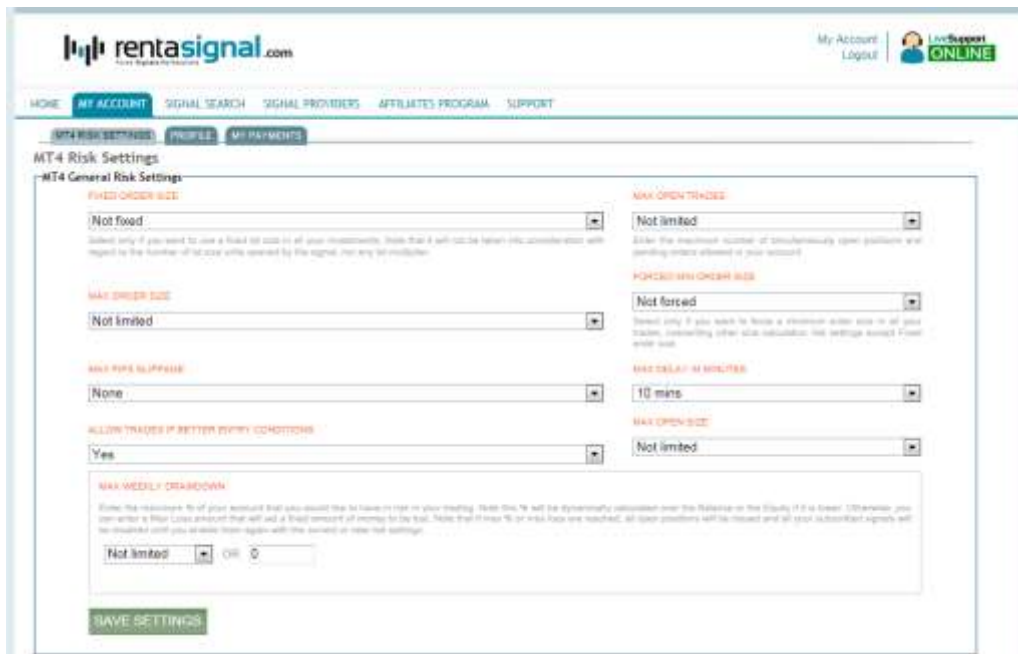
## SYSTEM PARAMETERS

**show\_error\_as\_alert:** this setting will show on MetaTrader 4 pop up any problem with status of your connection with Rent and Rent a Signal server.

**timeout:** this setting is related with check interval between your computers and Rent a Signal server. We strongly advice do not change this.

## WEB SETTINGS

These settings within your Rentasignal account will override EA Settings or work in conjunction. To access to your account web settings you have to log into the Rent a Signal Website, go to MY ACCOUNT – MT4 RISK SETTINGS



**Fixed Order Size:** Fix the order size for all your trades, even your signal provider is trading with different sizes.

**MAX Order Size:** Set a maximum order size for all your trades. It will prevent you to trade with a higher size than your desired limit.

**Allow Trades if Better Entry Conditions:** Rentasignal will calculate mathematically if your current quote is best than signal quote and proceed with the trade bypassing other settings.

**Max Open Trades:** Set the maximum number of simultaneously open trades.

**MAX Pips Slippage:** Set your desirable value for slippage. It will prevent you to enter on a trade if your current quote is different from signal quote.

**Allow Trades if Better Entry Conditions:** Rentasignal will calculate mathematically if your current quote is best than signal quote and proceed with the trade bypassing other settings.

**Max Open Trades:** Set the maximum number of simultaneously open trades. **Forced Min Order Size:** Select only if you want to force a minimum order size in all your trades, overwriting other size calculation risk settings except Fixed order size.

**Forced Min Order Size:** Select only if you want to force a minimum order size in all your trades, overwriting other size calculation risk settings except Fixed order size.

**MAX Order Size:** Set a maximum order size for all your trades. It will prevent you to trade with a higher size than your desired limit.

**MAX Delay in Minutes:** Set maximum expiration in time value for orders none executed. Orders old than selected value will be ignored

**Max Weekly Drawdown:** Enter the maximum % of your account that you would like to have in risk per week. Note this % will be dynamically calculated over the Balance or the Equity if it is lower. Otherwise, you can enter a Max amount that will set a fixed amount of money to be lost per week. Note that if max % or max drawdown is reached, all open positions will be closed and your account will be disabled until you enable it again with the current or new risk settings.

## WEB SETTINGS per signal

Per signal specific settings can be programmed too. Each signal can handle the following features: Max Weekly Drawdown, Size Multiplier. Max Open Trades, Max Open Size, Stop Loss and Take Profit.

ID	SIGNAL EXPERT ID	MAX WEEKLY DRAWDOWN (?)	SIZE MULTIPLIER	MAX OPEN TRADES	MAX OPEN SIZE	FIXED ORDER SIZE	SL IN PIPS	TP IN PIPS	LESS RISKY (?)	ENABLED
21344	JONASPAR BY GAVIOTA	Not Limited or 0	1	Not Limited	Not Limited	Not fixed	0	0	<input type="checkbox"/>	Disable
33004	COSMOS BY HEYDOR	Not Limited or 0	1	Not Limited	Not Limited	Not fixed	0	0	<input type="checkbox"/>	Disable

Save Settings

**Max Weekly Drawdown:** This value is calculated as Max Weekly Drawdown per your overall account. But will affect only the related signal.

**Size Multiplier:** This is one of the most important settings, because the size of your trades will be calculated based just on Size Multiplier. Rentasignal will multiply the signal's size orders with Size Multiplier value and your orders will be opened with the resulting size.

**Max Open trades:** Set the maximum number of simultaneously open trades per signal.

**Max Open Size:** Use this field for limiting the maximum open size for all your open trades.

**Fixed Order Size:** Fix the order size for all your trades within the related signal, even your signal provider is trading with different sizes.

**S/L in pips:** You will be able to introduce your own Stop Loss overriding signal's provider value, if applicable.

**T/P in pips:** You will be able to introduce your own Take Profit Loss overriding signal's provider value, if applicable.

**Less risky:** If ticked, this setting applies to S/L in pips. By applying this setting, Rentasignal will apply your selected values for S/L in pips, overriding provider's stop loss, but only if this value provides a lower risk than you signal's provider risk.

**Unsubscribe button:** You can click on this button to cancel your subscription to the signal.

**Enable (Red)/Disable (Green) buttons:** You can click on this button to stop receiving trades for a particular signal.

## Practical Samples

We provide you with some pictures including most common examples about Rent a signal EA setting.

### 1. One signal subscription only

Variable	Value
ab GENERAL_PARAMETERS	GENERAL_PARAMETERS
ab rentasignal_username	Your Rentasignal USERNAME
ab rentasignal_password_key	11213mm4b5b6h769sj698
buyer	true
power_on	true
ab BUYER_PARAMETERS	BUYER_PARAMETERS
buyer_lots_multiplier	1.0
buyer_lots_max_per_trade	9999.0
ab buyer_opt_filter_signal	
buyer_install_version	1
buyer_partial_closing	true
buyer_stp_broker	false
buyer_open_old_trades	true
ab SELLER_PARAMETERS	SELLER_PARAMETERS
seller_rentasignal_id	0
ab seller_opt_filter_magic_number	
ab seller_opt_filter_comment	
ab ADVANCED_PARAMETERS	ADVANCED_PARAMETERS
use_working_time_limitation	false
working_time_StartHour	7
working_time_StartMinute	0
working_time_EndHour	16
working_time_EndMinute	0
ab SYSTEM_PARAMETERS	SYSTEM_PARAMETERS
timeout	20
show_error_as_alert	true
force_execution	false

**2. Two signals subscription received on two different MetaTraders. First signal is ID 500, second ID 1000.**

Variable	Value
GENERAL_PARAMETERS	GENERAL_PARAMETERS
rentasignal_username	Your Rentasignal USERNAME
rentasignal_password_key	1l2l3mm4b5b6h769sj698
buyer	true
power_on	true
BUYER_PARAMETERS	BUYER_PARAMETERS
buyer_lots_multiplier	1.0
buyer_lots_max_per_trade	9999.0
buyer_opt_filter_signal	500
buyer_install_version	1
buyer_partial_closing	true
buyer_stp_broker	false
buyer_open_old_trades	true
SELLER_PARAMETERS	SELLER_PARAMETERS
seller_rentasignal_id	0
seller_opt_filter_magic_number	
seller_opt_filter_comment	
ADVANCED_PARAMETERS	ADVANCED_PARAMETERS
use_working_time_limitation	false
working_time_StartHour	7
working_time_StartMinute	0
working_time_EndHour	16
working_time_EndMinute	0
SYSTEM_PARAMETERS	SYSTEM_PARAMETERS
timeout	20
show_error_as_alert	true
force_execution	false

MetaTrader 1 receiving signal 1000

Variable	Value
GENERAL_PARAMETERS	GENERAL_PARAMETERS
rentasignal_username	Your Rentasignal USERNAME
rentasignal_password_key	1l2l3mm4b5b6h769sj698
buyer	true
power_on	true
BUYER_PARAMETERS	BUYER_PARAMETERS
buyer_lots_multiplier	1.0
buyer_lots_max_per_trade	9999.0
buyer_opt_filter_signal	1000
buyer_install_version	1
buyer_partial_closing	true
buyer_stp_broker	false
buyer_open_old_trades	true
SELLER_PARAMETERS	SELLER_PARAMETERS
seller_rentasignal_id	0
seller_opt_filter_magic_number	
seller_opt_filter_comment	
ADVANCED_PARAMETERS	ADVANCED_PARAMETERS
use_working_time_limitation	false
working_time_StartHour	7
working_time_StartMinute	0
working_time_EndHour	16
working_time_EndMinute	0
SYSTEM_PARAMETERS	SYSTEM_PARAMETERS
timeout	20
show_error_as_alert	true
force_execution	false

MetaTrader 2 receiving signal 500

**3. Two or more signal subscription, but receiving only one on two different MetaTrader Brokers. First picture is for Broker 1 and second for Broker 2. Signal is ID 500.**

Variable	Value
GENERAL_PARAMETERS	GENERAL_PARAMETERS
rentasignal_username	Your Rentasignal USERNAME
rentasignal_password_key	1i23mm4b5b6h769sj698
buyer	true
power_on	true
BUYER_PARAMETERS	BUYER_PARAMETERS
buyer_lots_multiplier	1.0
buyer_lots_max_per_trade	9999.0
buyer_opt_filter_signal	500
buyer_install_version	1
buyer_partial_closing	true
buyer_stp_broker	false
buyer_open_old_trades	true
SELLER_PARAMETERS	SELLER_PARAMETERS
seller_rentasignal_id	0
seller_opt_filter_magic_number	
seller_opt_filter_comment	
ADVANCED_PARAMETERS	ADVANCED_PARAMETERS
use_working_time_limitation	false
working_time_StartHour	7
working_time_StartMinute	0
working_time_EndHour	16
working_time_EndMinute	0
SYSTEM_PARAMETERS	SYSTEM_PARAMETERS
timeout	20
show_error_as_alert	true
force_execution	false

MT4 Broker 1 receiving signal 1000

Variable	Value
GENERAL_PARAMETERS	GENERAL_PARAMETERS
rentasignal_username	Your Rentasignal USERNAME
rentasignal_password_key	1i23mm4b5b6h769sj698
buyer	true
power_on	true
BUYER_PARAMETERS	BUYER_PARAMETERS
buyer_lots_multiplier	1.0
buyer_lots_max_per_trade	9999.0
buyer_opt_filter_signal	1000
buyer_install_version	2
buyer_partial_closing	true
buyer_stp_broker	false
buyer_open_old_trades	true
SELLER_PARAMETERS	SELLER_PARAMETERS
seller_rentasignal_id	0
seller_opt_filter_magic_number	
seller_opt_filter_comment	
ADVANCED_PARAMETERS	ADVANCED_PARAMETERS
use_working_time_limitation	false
working_time_StartHour	7
working_time_StartMinute	0
working_time_EndHour	16
working_time_EndMinute	0
SYSTEM_PARAMETERS	SYSTEM_PARAMETERS
timeout	20
show_error_as_alert	true
force_execution	false

MT4 Broker 2 receiving signal 500

**4. Three or more signal subscription but receiving two on first MetaTrader Broker and the other on second MetaTrader broker. First picture is for Broker 1 and second for Broker 2. Signals are ID 500, 1000 and 1500.**

Variable	Value
GENERAL_PARAMETERS	GENERAL_PARAMETERS
rentasignal_username	Your Rentasignal USERNAME
rentasignal_password_key	1i23mm4b5b6h769sj698
buyer	true
power_on	true
BUYER_PARAMETERS	BUYER_PARAMETERS
buyerLotsMultiplier	1.0
buyerLotsMaxPerTrade	9999.0
buyerOptFilterSignal	500,1000
buyerInstallVersion	2
buyerPartialClosing	true
buyerStpBroker	false
buyerOpenOldTrades	true
SELLER_PARAMETERS	SELLER_PARAMETERS
sellerRentasignalId	0
sellerOptFilterMagicNumber	
sellerOptFilterComment	
ADVANCED_PARAMETERS	ADVANCED_PARAMETERS
useWorkingTimeLimitation	false
workingTimeStartHour	7
workingTimeStartMinute	0
workingTimeEndHour	16
workingTimeEndMinute	0
SYSTEM_PARAMETERS	SYSTEM_PARAMETERS
timeout	20
showErrorAsAlert	true
forceExecution	false

MT4 Broker 1 receiving signal 1500

Variable	Value
GENERAL_PARAMETERS	GENERAL_PARAMETERS
rentasignal_username	Your Rentasignal USERNAME
rentasignal_password_key	1i23mm4b5b6h769sj698
buyer	true
power_on	true
BUYER_PARAMETERS	BUYER_PARAMETERS
buyerLotsMultiplier	1.0
buyerLotsMaxPerTrade	9999.0
buyerOptFilterSignal	1500
buyerInstallVersion	1
buyerPartialClosing	true
buyerStpBroker	false
buyerOpenOldTrades	true
SELLER_PARAMETERS	SELLER_PARAMETERS
sellerRentasignalId	0
sellerOptFilterMagicNumber	
sellerOptFilterComment	
ADVANCED_PARAMETERS	ADVANCED_PARAMETERS
useWorkingTimeLimitation	false
workingTimeStartHour	7
workingTimeStartMinute	0
workingTimeEndHour	16
workingTimeEndMinute	0
SYSTEM_PARAMETERS	SYSTEM_PARAMETERS
timeout	20
showErrorAsAlert	true
forceExecution	false

MT4 Broker 2 receiving signal 500 & 1000

## Contact Us for any support

To save time in the future we recommend you to print a copy of this document. We hope you have found this manual instructive and effective in explaining how to use Rentasignal Autotrading. However, please let us know if you think there is anything we must improve or add for a better understanding.

### We look forward to your business!

Contact us through [support@cc.rentasignal.com](mailto:support@cc.rentasignal.com) if you need any kind of support or if you want that we will show you to make the most of your Autotrading account with Rent a Signal.



If customer support representative requires you to login on the Support site to continue with assistance, your username is the e-mail used with your autotrading account and you only have to login Rentasignal.

If you don't remember your password, click on **Forget your password?** for getting by e-mail a new password.

